

Supplementary material of the manuscript published in *Vitis* **58** (Special Issue) 89–93 (2019):

Uncovering Northeast Portugal grapevine's varietal legacy

D. AUGUSTO¹⁾, A. A. OLIVEIRA^{2),3)}, V. FALCO^{2),4)} and I. CASTRO^{1),3)}

¹⁾Department of Genetics and Biotechnology, University of Trás-os-Montes and Alto Douro, Vila Real, Portugal

²⁾Department of Agronomy, University of Trás-os-Montes and Alto Douro, Vila Real, Portugal

³⁾Centre for the Research and Technology of Agro-Environmental and Biological Sciences, University of Trás-os-Montes and Alto Douro, Vila Real, Portugal

⁴⁾Chemistry Research Centre-Vila Real, CQ-VR, University of Trás-os-Montes and Alto Douro, Vila Real, Portugal

Table S1

Local name of 21 grape samples

Sample code ¹	Local name
Ag2	Verdelheira / Verdelho
Ag6	Loulela / Folgazona
Ag7	Mourisco
Ag8	Lázaro / Raposeira
Ag14	Rosada
Vs13	Tinta-Amarela-Antiga
Vs27	Tinta-Amarela-Antiga
Sd2	Tinta-Grossa
Sd5	Polita
Sd12	Tinta-Garcia / João-Garcia
Qs6	Touriga-Fêmea
Qs10	Tinta-Bastardinha
Qs12	Sousão
Qs13	Barca
Qs14	Casculho
Qs15	Tinta-Francisca
Qs16	Malvasia-Preta
Qs17	Mourisco
Qs18	Grand Noir
Qs19	Rufete
Qs21	Moreto

¹ Ag - Aguieiras; Vs - Vassal; Sd - Sendim; V - Quinta dos Lagares; Qs - Quinta do Seixo.

Table S2

Genotypes of the 34 grape varieties detected at 6 nuclear SSR loci analysed

Cultivar prime name	SSR sizes (bp)											
	VVS2	VVMD5	VVMD7	VVMD27	VrZAG62	VrZAG79						
Alvarelhão-Ceitão	142	150	222	236	239	243	185	191	191	191	249	255
Trousseau	142	150	234	234	239	257	171	185	191	191	243	245
Baga	142	154	228	236	239	239	175	185	191	207	245	249
Black Monukka	140	150	230	236	253	253	177	191	191	191	245	255
Camarate-Tinto	144	150	232	234	243	253	177	185	191	203	245	249
Casculho	144	150	232	234	249	253	177	185	203	207	245	249
Castelão	142	144	232	234	243	257	175	177	191	191	245	249
Chasselas	132	142	224	232	239	247	181	185	197	207	249	257
Cornifesto	142	144	230	234	249	253	177	185	203	207	245	249
Mantúo	142	150	230	234	243	253	177	181	191	191	245	255
Dodrelyabi	132	134	222	232	247	255	175	181	207	207	249	249
Donzelinho-Roxo	142	150	224	234	239	243	185	191	189	195	249	255
Folha-de-Figueira	142	156	232	236	239	239	175	181	189	189	249	249
Gouveio	150	156	222	234	239	243	181	185	189	191	249	249
Grand Noir	138	150	222	230	239	243	177	179	191	191	241	257
Hebén	142	144	230	236	239	243	177	191	191	191	245	255
Jerónimo de Tudela	134	142	230	234	243	243	191	191	191	191	255	255
Marufo	142	144	224	228	239	243	179	191	191	195	245	255
Molar	132	150	222	234	239	257	177	185	191	197	243	259
Mouratón	136	150	230	234	249	257	177	185	191	207	245	249
Palomino Fino	132	144	224	236	239	249	181	191	191	197	249	255
Perlette	132	144	230	232	247	253	175	177	191	207	245	253
Rufete	132	156	222	232	239	257	177	185	191	197	243	245
Samarrinho	132	150	228	228	239	257	175	185	189	197	243	249
Síria	136	150	218	230	239	249	177	177	189	207	245	245
Tempranillo	142	144	232	232	239	253	179	179	199	203	245	249
Tinta-Barroca	142	150	224	232	239	243	177	179	191	195	243	245
Tinta-Carvalha	144	150	228	232	249	263	177	185	197	207	245	249
Tinta-Francisca	132	132	234	236	239	239	181	185	189	201	241	245
Tinto-Cão	132	132	228	230	239	263	177	181	189	197	245	249
Touriga-Franca	142	150	222	224	239	243	177	179	195	197	243	245
Touriga-Nacional	142	152	222	232	239	239	177	185	191	197	243	243
Trincadeira	132	150	230	234	239	249	177	181	191	207	245	249
Vinhão	132	134	218	222	239	263	185	185	191	199	243	249

Table S3

List of allele sizes (in base pairs) and their frequency of each chloroplastidial microsatellite loci analysed. The corresponding chlorotype and frequency observed in the 34 grape cultivars are also shown

Loci	ccmp3		ccmp5		ccmp10		Chlorotype	Frequency (%)	
	105	106	102	103	110	111			112
Allele sizes (bp)									
Combination of ccmp alleles	x			x	x			A	67.6
	x			x		x		B	2.9
	x			x			x	C	2.9
		x	x			x		D	26.5
Frequency	0.74	0.26	0.26	0.74	0.68	0.29	0.03		

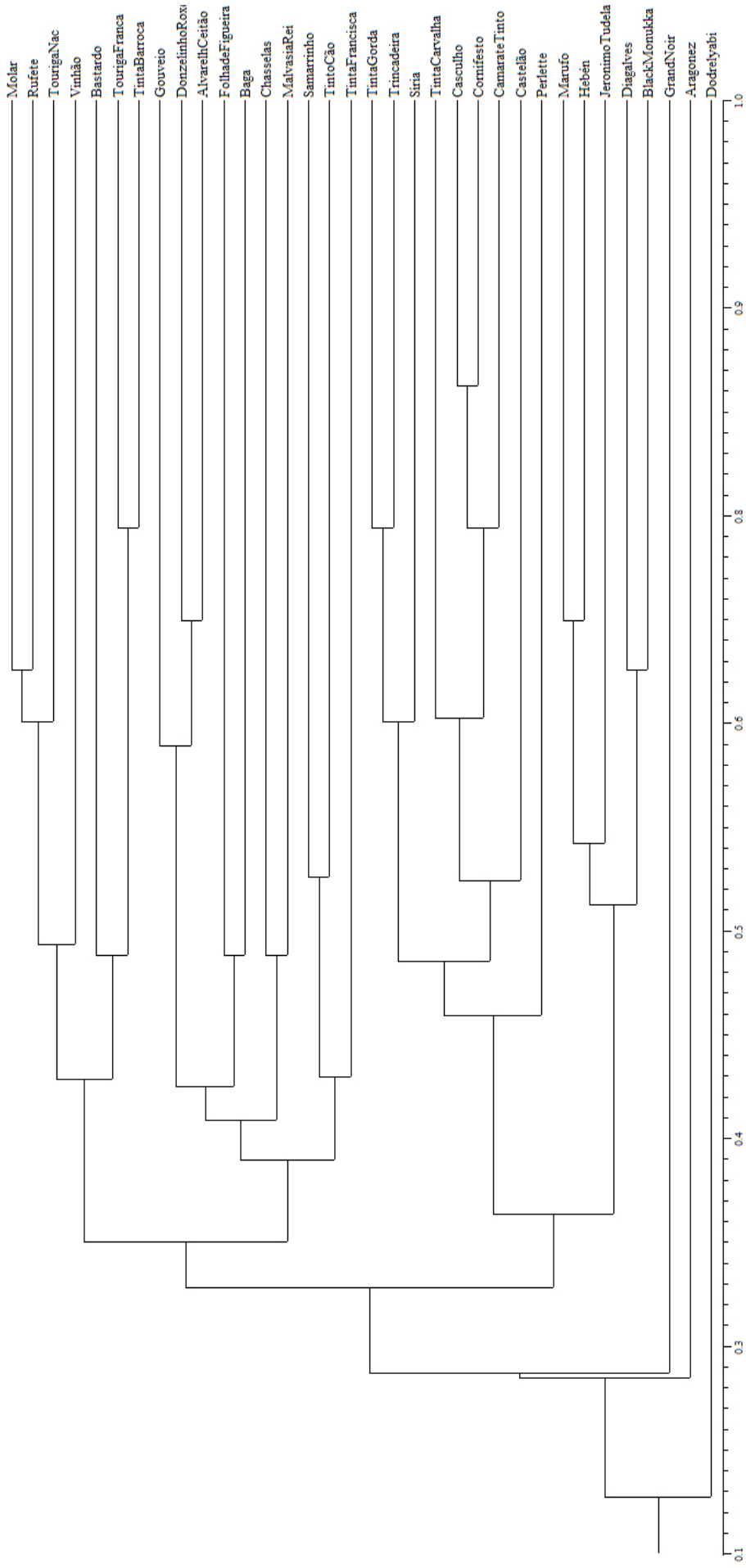


Fig. S1: Dendrogram of 34 different grapevine varieties constructed by UPGMA clustering method based on a matrix generated with allelic data from the nSSR alleles and Dice's similarity coefficient.