

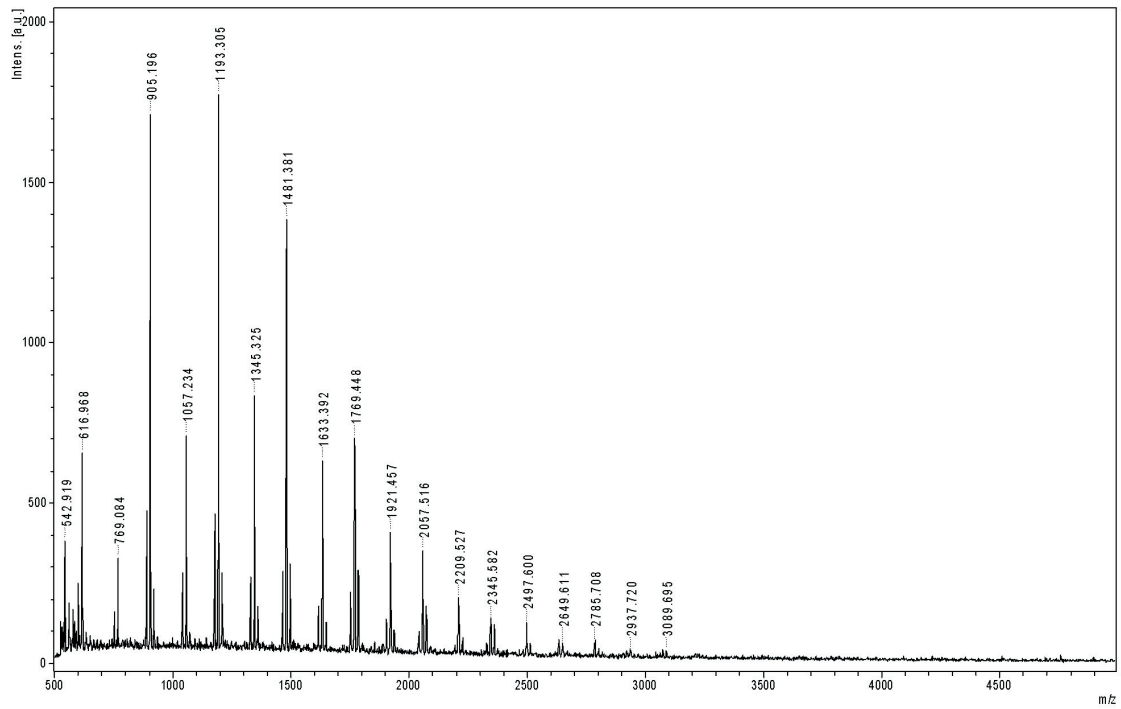
Characterization of seed proanthocyanidins of thirty-two red and white hybrid grape varieties

F. DE MARCHI^{1),3)}, R. SERAGLIA²⁾, L. MOLIN²⁾, P. TRALDI²⁾, M. DE ROSSO¹⁾, A. PANIGHEL¹⁾, A. DALLA VEDOVA¹⁾,
M. GARDIMAN¹⁾, M. GIUSTI¹⁾, R. CARRARO¹⁾ and R. FLAMINI¹⁾

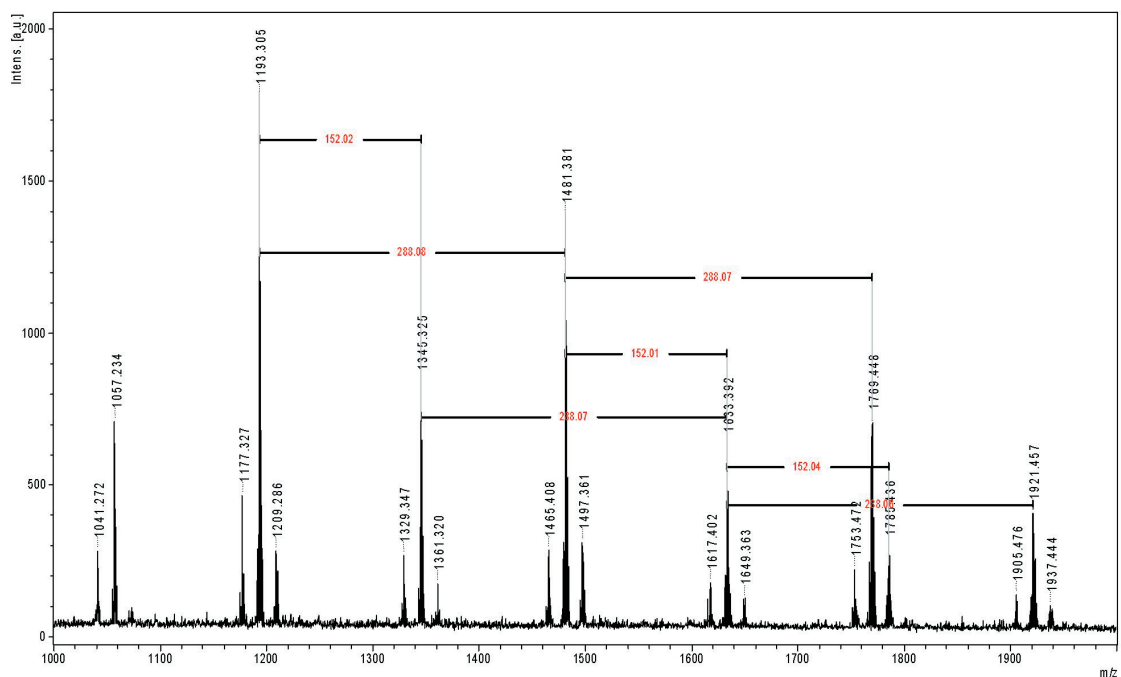
¹⁾ Consiglio per la ricerca in agricoltura e l'analisi dell'economia agraria, Centro di Ricerca per la Viticoltura (CRA-VIT),
Conegliano, Italy

²⁾ CNR-IENI, Padova, Italy

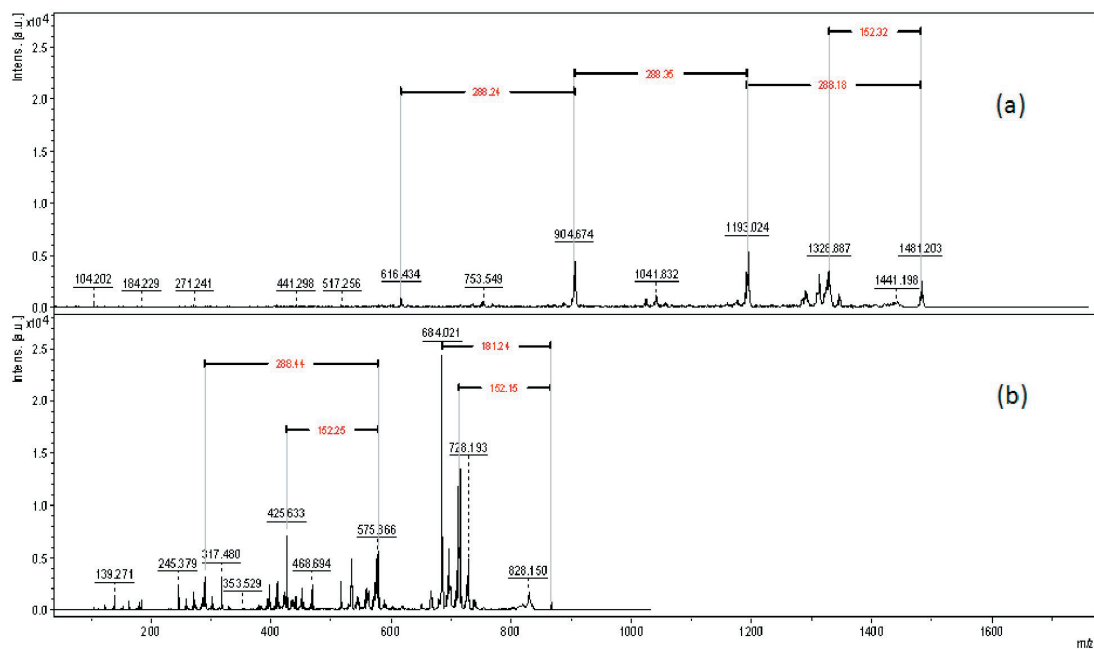
³⁾ Dipartimento Territorio e Sistemi Agroforestali, Università degli Studi di Padova, Padua, Italy



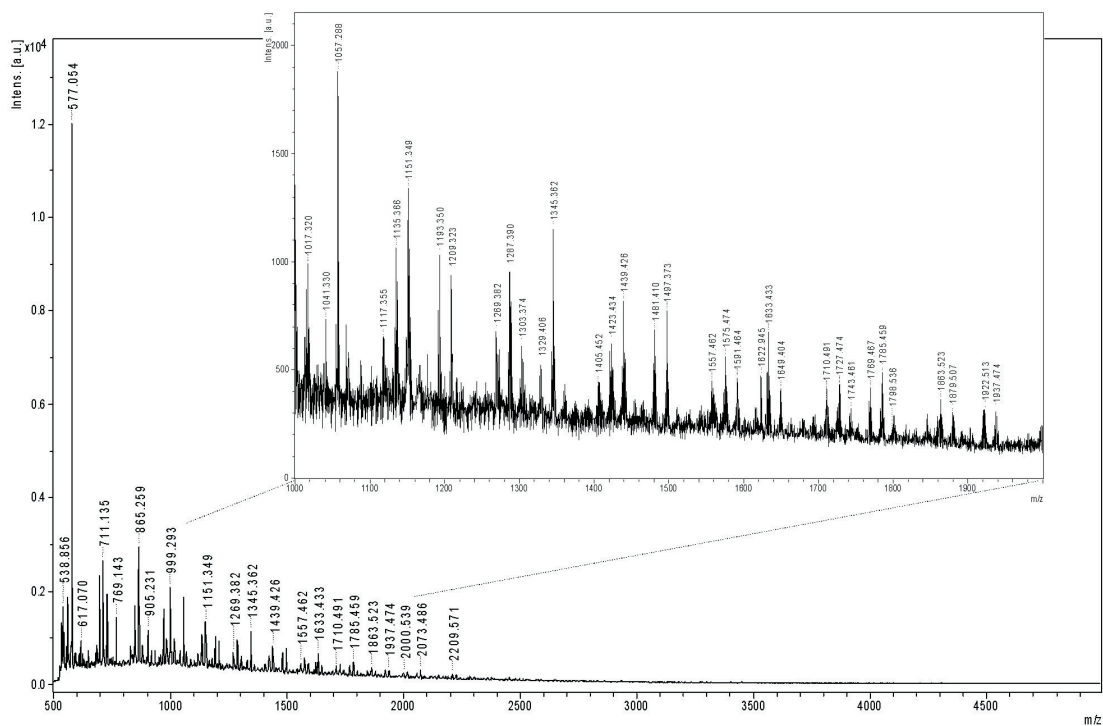
Supplemental Fig. 1: MALDI-TOF mass spectrum of Burdin 74-19 grape seeds extract.



Supplemental Fig. 2: Partial MALDI mass spectrum with the value of the repetitive units found.



Supplemental Fig. 3: MALDI TOF/TOF mass spectra of: **a)** ion at m/z 1481 putatively assigned to PAs B-type [tetramer-G2+Na]⁺ or [pentamer+K]⁺, **b)** ion at m/z 865 putatively assigned to [trimer+H]⁺ A-type.



Supplemental Fig. 4: MALDI-TOF mass spectrum of Clinton sample. Spectrum between m/z 1000-1900 is enlarged.