

Supplementary material of the manuscript published in *Vitis* **56**, 53–54 (2017):

Origin of 'Csillám', a promising source for black rot resistance

E. KISS¹⁾, K. TÓTH-LENCSES¹⁾, A. SZÓKE¹⁾, A. KERÉKES¹⁾, A. VERES¹⁾, D. ROZNIK²⁾ and P. KOZMA²⁾

¹⁾ Szent István University, Institute of Genetics, Microbiology and Biotechnology, Gödöllő, Hungary

²⁾ Department of Grape Breeding, Research Institute for Viticulture and Enology, University of Pécs, Pécs, Hungary

T a b l e

SSR alleles of 'Kékfrankos', 'Seibel 4643', 'Csillám', 'Seyve Villard 12375' and 'Csabagyöngye' at 31 loci

Varieties SSR locus	Kékfrankos		Seibel 4643		Csillám		Seyve Villard 12375		Csabagyöngye	
	Allele 1	Allele 2	Allele 1	Allele 2	Allele 1	Allele 2	Allele 1	Allele 2	Allele 1	Allele 2
VVS2	144	144	126	134	134	144	134	144	134	154
VVMD5	228	242	228	252	228	228	234	238	238	238
VVMD7	243	253	247	259	247	253	241	245	251	251
VVMD25	252	258	240	244	240	258	244	258	244	244
VVMD27	180	194	182	190	190	194	182	190	182	182
VVMD28	248	248	254	262	248	262	236	238	220	270
VVMD32	251	273	241	251	251	251	241	257	273	273
VrZAG62	198	208	182	192	192	208	182	198	190	208
VrZAG79	240	254	246	264	254	264	258	264	258	262
VVMD21	248	254	228	242	228	254	228	254	242	266
VrZAG67	140	150	168	168	140	168	154	172	140	140
VrZAG64	140	160	140	142	142	160	140	146	160	160
VVMD36	263	263	239	263	263	263	239	269	263	263
VVib32	162	162	154	158	154	162	154	154	162	162
VrZAG25	226	226	248	248	226	248	226	234	226	226
VrZAG47	160	174	162	170	170	174	162	170	160	160
VVIP31	177	177	187	195	177	195	177	181	181	195
VVMD6	198	208	188	206	188	208	212	212	188	208
VrZAG112	236	244	242	244	242	244	232	236	242	242
VVIV37	152	162	154	162	154	162	150	162	162	162
VrZAG83	192	198	192	204	192	204	194	194	192	204
VVMD31	201	211	211	211	211	211	213	213	213	221
VVli51	260	266	248	248	248	260	244	244	260	260
VVIP60	320	320	312	320	320	320	316	320	316	326
VVS5	88	98	88	90	90	98	90	112	90	92
VVS4	168	176	180	196	176	180	168	176	168	168
Scu10	202	208	208	208	202	208	196	208	204	212
VMC4h6	160	184	160	160	160	160	160	160	160	164
VMC6d12	176	180	160	178	160	176	178	178	132	178
Scu8	184	184	184	184	184	184	184	184	184	184
VMC2h4	217	223	203	209	203	223	203	209	203	217

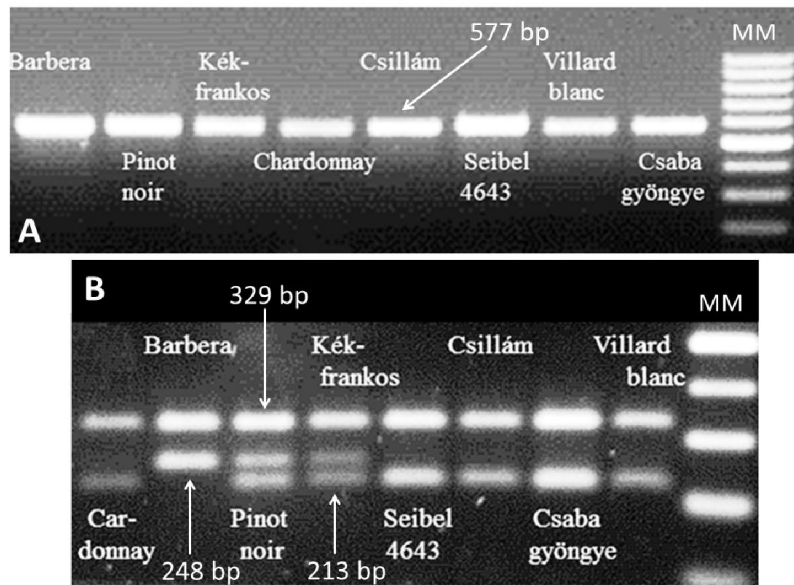


Figure: Results of PCR with the 20D18CB9 CAPS primer pairs followed by *DdeI* enzymatic cleavage. **A**: Monomorphic amplification pattern before restriction digestion; **B**: After *DdeI* digestion polymorphisms were obtained. Reference cultivars: 'Chardonnay': homozygous for *Gret1* insertion; 'Barbera': homozygous for the absence of *Gret1*, 'Pinot noir': heterozygous for the presence of *Gret1*; M: DNA molecular weight marker (Thermo Fisher Gene Ruler 100 bp Ladder Plus).